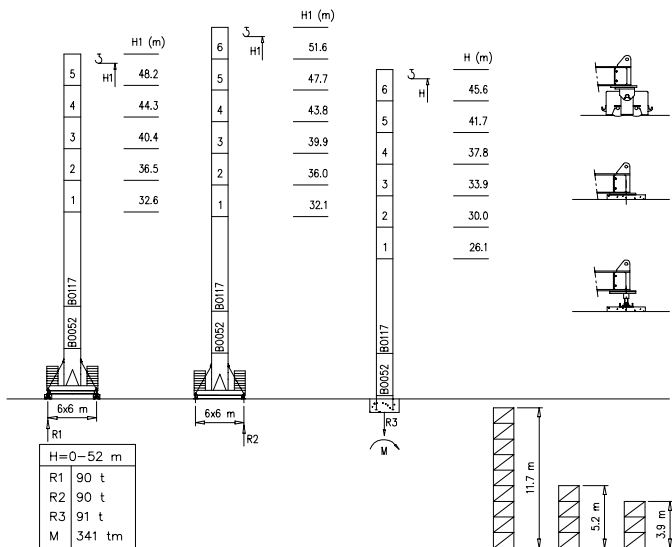


- S2050 - 2.05x2.05 m
- M2500 - 2.50x2.50 m

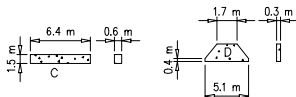
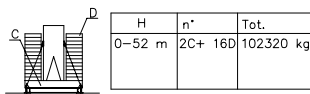
Torre/Reazioni - Masts/Reactions - Mat/Réactions - Mast/Eckdrücke - Mástil/Reacciones - Tramo/Reações

S2050

68.8 m → 80 m

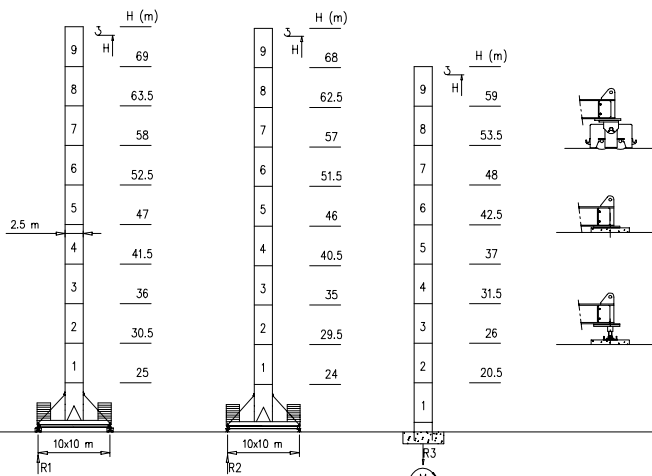


Peso zavorra - Ballast weight - Poids du lest - Ballastgewicht - Peso de lastre



M2500

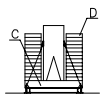
68.8 m → 80 m



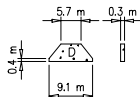
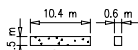
H=0-48 m	H>48m
R1 120 t	Contact us
R2 120 t	
R3 150 t	
M 634 tm	



Peso zavorra - Ballast weight - Poids du lest - Ballastgewicht - Peso de lastre



H	n*	Tot.
0-69 m	2C+ 8D	102320 kg



Curve di carico – Courbes de charges – Load diagrams – LastKurven – Curvas de cargas

Pmax 12000/6000 kg

	31900 kg	80 m	3.5	36	40	44	48	52	56	60	62	64	66	68	70	72	74	76	80	m	
			6000	6000	5400	4700	4200	3800	3500	3200	3000	2800	2700	2500	2400	2300	2200	2150	2000	kg	
	31900 kg	74.4 m	3.5	40	44	48	52	56	60	62	64	66	68	70	72	74.4					m
			6000	6000	5400	4900	4350	4000	3500	3300	3200	3050	2900	2800	2700	2600	kg				
	29000 kg	68.8 m	3.5	44	48	52	56	60	62	64	66	68.8								m	
			6000	6000	5450	4900	4300	4000	3700	3500	3400	3300	kg								
	26100 kg	63.2 m	3.5	44	48	52	56	60	62	63.2								m			
			6000	6000	5500	5000	4500	4100	3900	3700	kg										

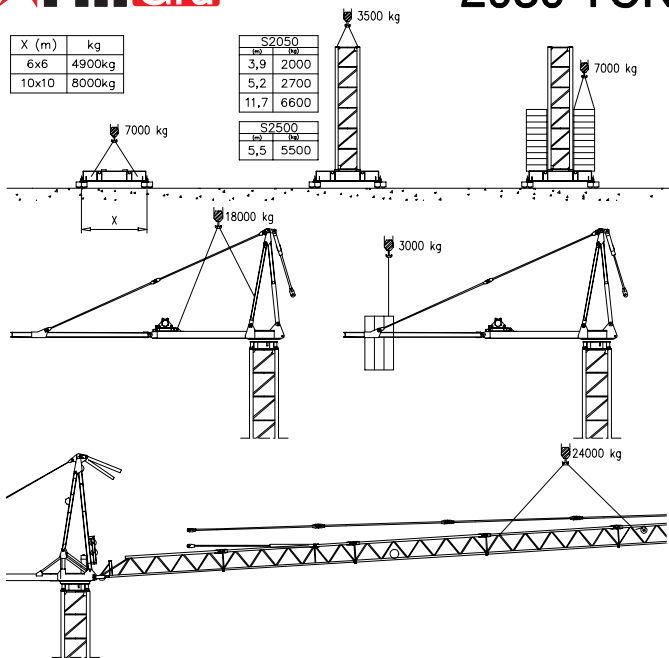
Pmax 12000/6000 kg

	31900 kg	80 m	3.5	18	22	26	28	32	36	40	44	48	52	56	60	62	64	66	68	70	72	74	76	80	m
			12000	11000	8500	7500	6800	6000	5400	4700	4200	3800	3500	3200	3000	2800	2700	2500	2400	2300	2200	2150	2000	kg	
	31900 kg	74.4 m	3.5	21	22	26	28	32	36	40	44	48	52	56	60	62	64	66	68	70	72	74.4			m
			12000	11000	9800	9000	7800	7000	6000	5400	4900	4350	4000	3500	3300	3200	3050	2900	2800	2700	2600	kg			
	29000 kg	68.8 m	3.5	24	26	28	32	36	40	44	48	52	56	60	62	64	66	68.8				m			
			12000	11000	10000	9000	7800	7000	6000	5450	4900	4300	4000	3700	3500	3400	3300	kg							
	26100 kg	63.2 m	3.5	24	26	28	32	36	40	44	48	52	56	60	62	63.2				m					
			12000	11000	10500	9200	8000	7000	6000	5500	5000	4500	4100	3900	3700	kg									

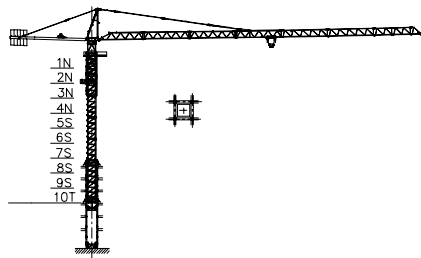
X (m)	kg
6x6	4900kg
10x10	8000kg

S2050	
mm	kg
3,9	2000
5,2	2700
11,7	6600

S2500	
mm	kg
5,5	5500



Gru in cavedito - Climbing crane - Télescopage sur dalles - Kletterkrane in Gebäuden - Telescopage gruas trepadoras - Telescopagem sobre lajes



Number of tower section	H (m.)
5S+2N+T	33.40
5S+3N+T	37.30
5S+4N+T	41.20

N = Standard mast element  
 T = Telescopic element  
 S = Special mast element

