

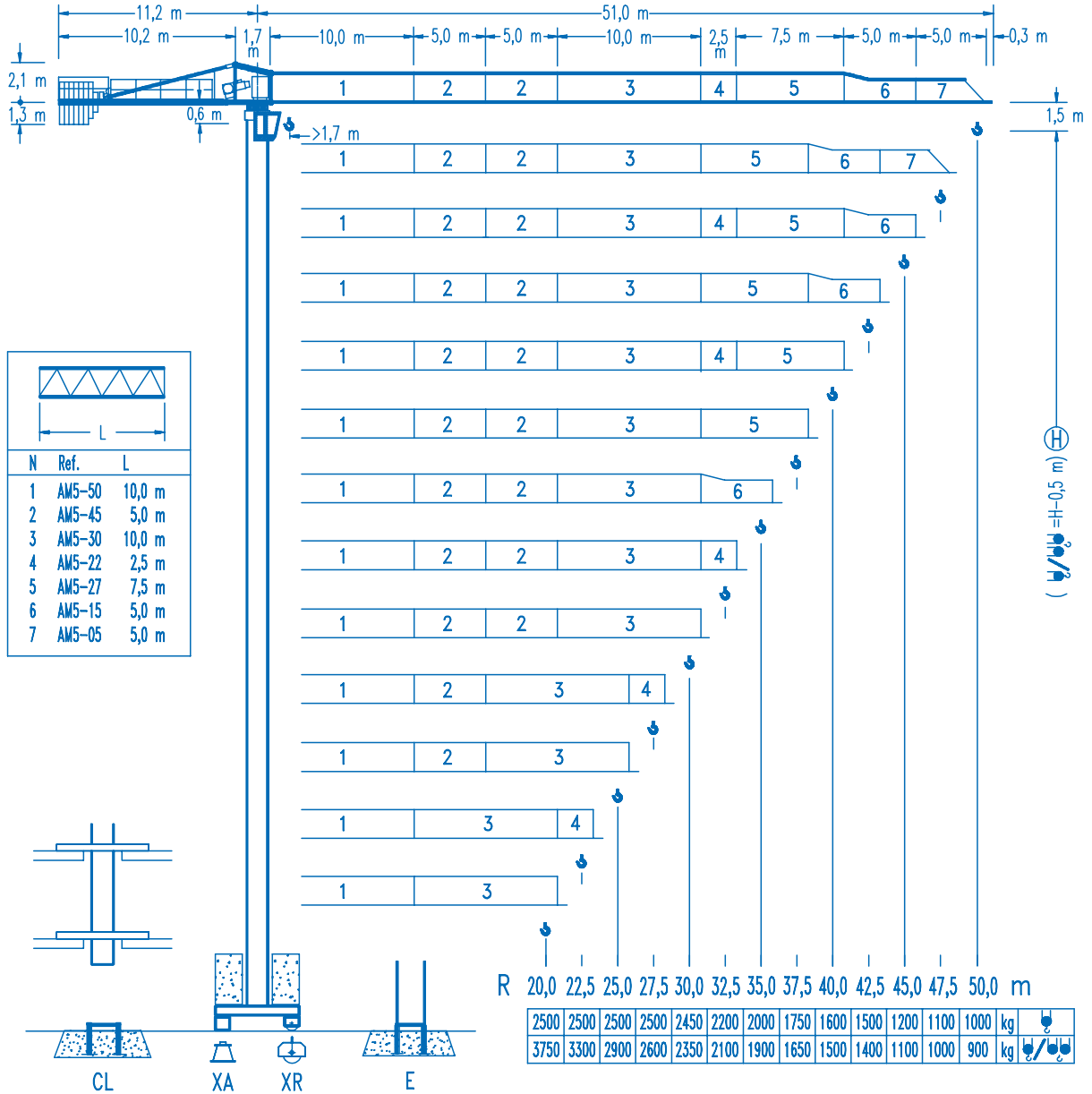


COMANSA

LINDEN 500

5 LC 5010

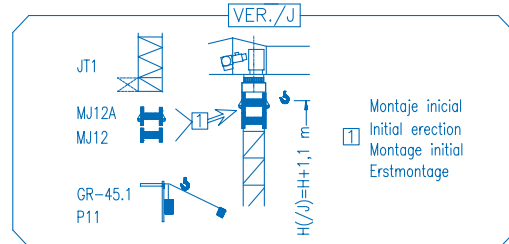
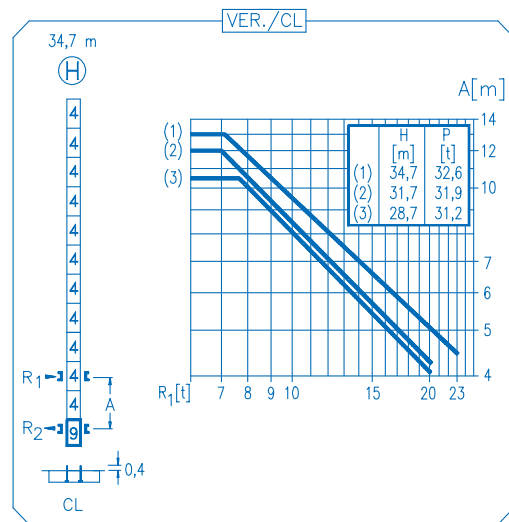
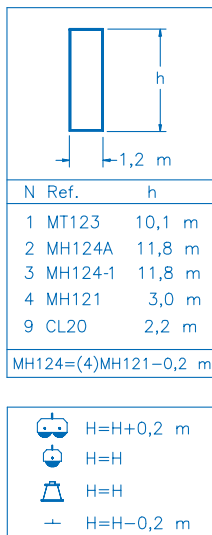
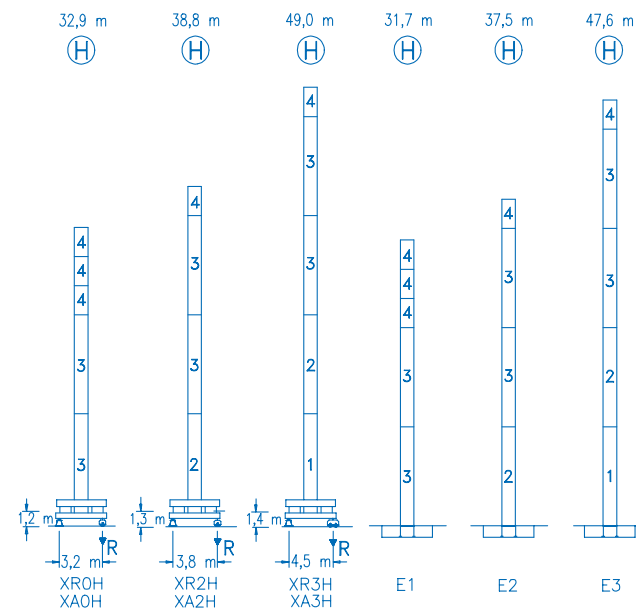
5 t



R	20,0	22,5	25,0	27,5	30,0	32,5	35,0	37,5	40,0	42,5	45,0	47,5	50,0	m	kg	kg
	2500	2500	2500	2500	2450	2200	2000	1750	1600	1500	1200	1100	1000	1000	900	kg
	3750	3300	2900	2600	2350	2100	1900	1650	1500	1400	1100	1000	900	kg	kg	kg

CE
DIN 15018 H1 B3

R	R(Cmax)	Cmax	20,0	22,5	25,0	27,5	30,0	32,5	35,0	37,5	40,0	42,5	45,0	47,5	50,0	m	kg
50,0	22,8 m	2500	2500	2500	2250	2020	1830	1670	1530	1410	1310	1220	1140	1070	1000	20,0	kg
	12,2 m	5000	2850	2480	2190	1950	1760	1590	1450	1330	1220	1120	1040	970	900		
47,5	23,4 m	2500	2500	2500	2320	2090	1890	1720	1580	1460	1350	1260	1170	1100	22,5	kg	
	14,4 m	5000	2930	2550	2250	2010	1810	1640	1490	1370	1260	1160	1080	1000			
45,0	23,8 m	2500	2500	2500	2370	2130	1930	1760	1610	1490	1380	1280	1200	25,0	kg		
	12,7 m	5000	2980	2600	2300	2050	1840	1670	1520	1400	1280	1190	1100				
42,5	27,1 m	2500	2500	2500	2500	2460	2230	2040	1880	1730	1610	1500	27,5	kg			
	14,4 m	5000	3450	3010	2660	2380	2150	1950	1780	1640	1510	1400					
40,0	27,0 m	2500	2500	2500	2500	2450	2220	2030	1860	1720	1600	20,0	kg				
	14,3 m	5000	3420	2990	2640	2370	2130	1940	1770	1630	1500						
37,5	27,3 m	2500	2500	2500	2500	2480	2250	2060	1890	1750	25,0	kg					
	14,5 m	5000	3470	3030	2680	2400	2160	1970	1800	1650							
35,0	28,7 m	2500	2500	2500	2500	2500	2380	2170	2000	20,0	kg						
	15,1 m	5000	3650	3190	2830	2530	2280	2080	1900								
32,5	29,0 m	2500	2500	2500	2500	2500	2410	2200	27,5	kg							
	15,3 m	5000	3690	3230	2860	2560	2310	2100									
30,0	29,5 m	2500	2500	2500	2500	2500	2450	20,0	kg								
	15,5 m	5000	3750	3280	2910	2600	2350										



R. máx.	En servicio	XR0H 43,2 t
	In operation	
	En service	
	In Betrieb	
	XR2H 42,8 t	
	XR3H 48,2 t	

R. máx.	Fuera de servicio	XR0H 48,4 t
	Out of service	
	Hors service	
	Ausser Betrieb	
	XR2H 57,2 t	
	XR3H 77,9 t	

CS2-1.9

1,9 kW

16 m/min
48 m/min

CFU-2.2

2,2 kW

0 ⇄ 80 m/min

GR-9.0

90 Nm

0 ⇄ 0,8 rpm

TS2-3.0	TS2-4.5	TS2-5.5
2x30 Nm	2x45 Nm	2x55 Nm
0 ⇄ 20 m/min		
XR0H	XR2H	XR3H

ES3-18-12

18 kW

	I	II	III
m/min	8	32	64
kg	2500	2500	1300
m/min	4	16	32
kg	5000	5000	2600

ES3-13-12

13,2 kW

	I	II	III
m/min	6	24	48
kg	2500	2500	1300
m/min	3	12	24
kg	5000	5000	2600

EFU2-18-12

18 kW

EFU2-11-12

11 kW

Tensión de alimentación	400 V
Operating voltage	3 ph
Tension de service	50 Hz
Betriebsspannung	

Opcional
Optional
En option
Kaufoption
