

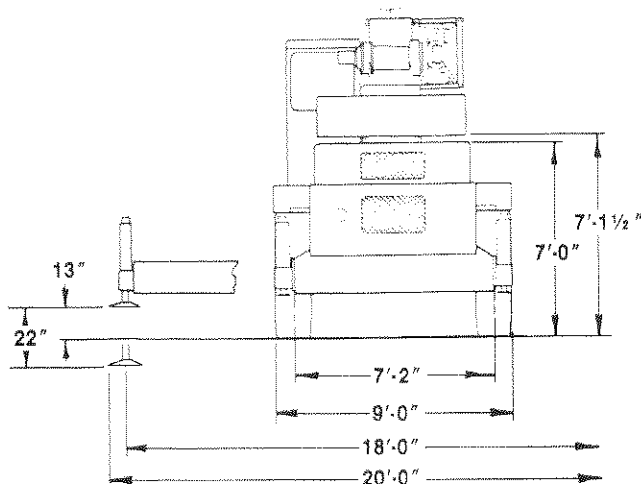
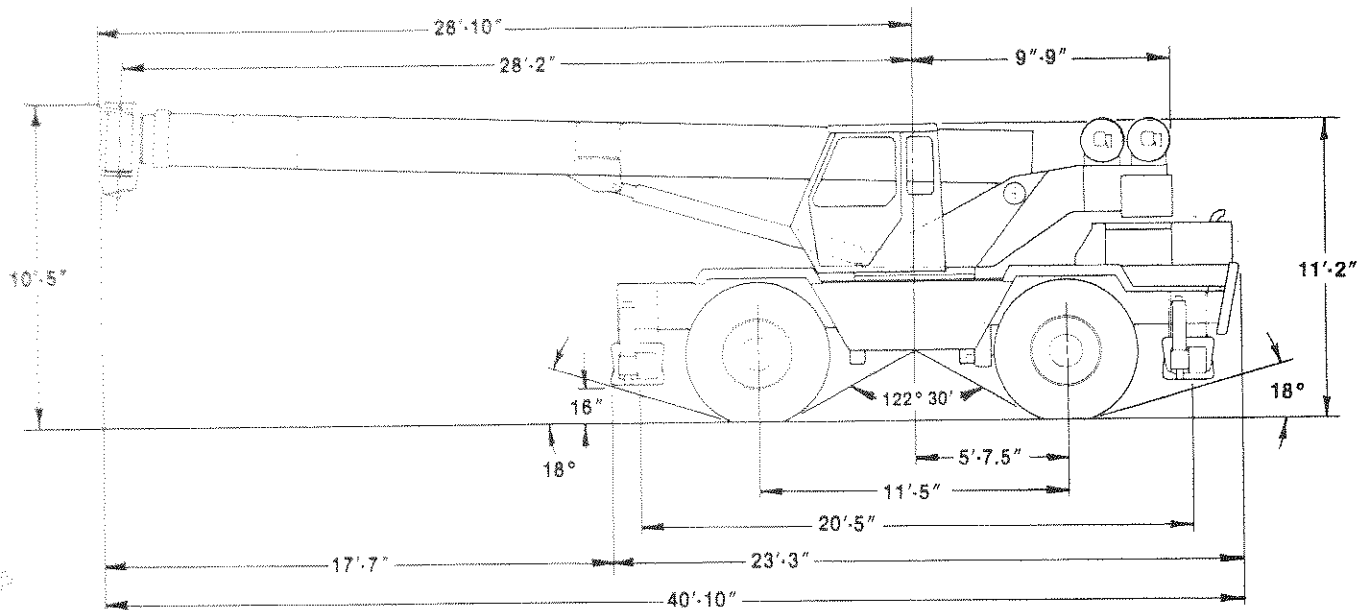


BANTAM® S-888B

general specifications
hydraulic rough terrain crane — 33 ton capacity

General Dimensions

Note: Dimensions given assume boom is fully retracted in travel position and crane is equipped with standard tires.



Operating Weight

WEIGHT

55,950 lbs with 81' boom, main winch only and 4,300 lb. counterweight.

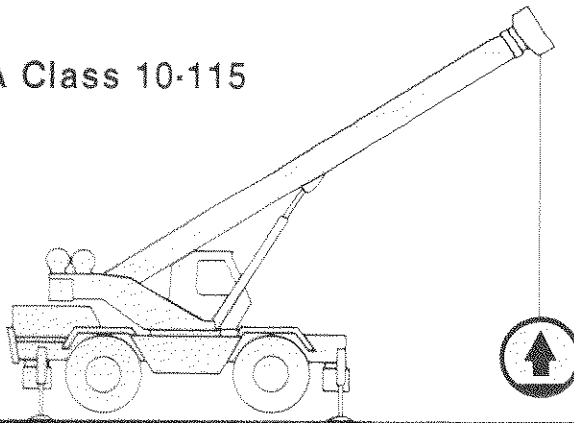
WEIGHT DISTRIBUTION

	Front lbs	Rear lbs	Total lbs
Standard Machine	29,610	26,340	55,950
Add: 32' Jib	+ 1,520	- 620	+ 900
Add: 49' Jib	+ 1,660	- 460	+ 1,200
Add: Auxiliary Winch ..	- 10	+ 110	+ 100
Add: 23:50 x 25 Tires ...	+ 210	+ 210	+ 420

Load Ratings

33 Ton Capacity — PCSA Class 10-115

Stability 85%



ON OUTRIGGERS OVER FRONT											RADIUS	CRANE WORKING POSITIONS	
BOOM CAPACITY	REF. BOOM ANGLE	BOOM LENGTH 32.00' Retracted	BOOM ANGLE	BOOM LENGTH 44.25'	BOOM ANGLE	BOOM LENGTH 56.50'	BOOM ANGLE	BOOM LENGTH 68.75'	BOOM ANGLE	BOOM LENGTH 81.00' Extended			
10	25°	66,000	73°	51,100							10		
12	24°	55,000	70°	47,200							12		
15	15°	46,500	65°	43,000	72°	34,200		75°	26,000		15		
20	4°	35,400	58°	35,900	66°	27,000		71°	21,500	75°	20,000		20
25	27°	26,900	50°	27,400	61°	23,400		66°	18,200	72°	17,200		25
30			41°	21,800	55°	20,500		62°	15,400	67°	14,800		30
35			30°	17,700	48°	17,900		57°	13,600	63°	12,500		35
40			9°	14,600	40°	15,000		52°	12,100	69°	11,250		40
50					19°	10,200		40°	9,750	50°	9,000		50
60							24°	7,300		40°	7,400		60
70										26°	8,150		70
75										16°	5,300		75

ON TIRES ST. OVER FRONT				
RADIUS	MAX ANGLE	MIN ANGLE	ALL BOOM LENGTHS	RADIUS
10	75°	67°	50,200	10
12	75°	63°	41,500	12
15	75°	57°	30,700	15
20	75°	45°	20,500	20
25	75°	29°	14,700	25
30	74°	0°	10,500	30
35	69°	0°	8,050	35
40	61°	0°	6,250	40
50	52°	0°	3,950	50
60	41°	0°	2,550	60
70	27°	0°	1,600	70

ON OUTRIGGERS 360°											SIDE STOW JIB			RADIUS
BOOM CAPACITY	REF. BOOM ANGLE	BOOM LENGTH 32.00' Retracted	BOOM ANGLE	BOOM LENGTH 44.25'	BOOM ANGLE	BOOM LENGTH 56.50'	BOOM ANGLE	BOOM LENGTH 68.75'	BOOM ANGLE	BOOM LENGTH 81.00' Extended	MAX. BOOM & 32' JIB	MAX. BOOM & 49' JIB		
10	65°	66,000	73°	51,100									10	
12	61°	55,000	70°	47,200									12	
15	55°	45,200	65°	43,000	72°	34,200		75°	26,000				15	
20	43°	32,200	58°	32,700	66°	27,000		71°	21,500	75°	20,000		20	
25	27°	24,400	50°	24,900	61°	23,400		66°	18,200	72°	17,200		25	
30			41°	21,800	55°	20,500		62°	15,400	67°	14,800		30	
35			30°	17,700	48°	17,900		57°	13,600	63°	12,500		35	
40			9°	14,600	40°	15,000		52°	12,100	69°	11,250		40	
50					19°	10,200		40°	9,750	50°	9,000		50	
60							24°	7,300		40°	7,400		60	
70										26°	8,150		70	
75										16°	5,300		75	
85										47°	3,400	55°	3,200	75
95										44°	2,400	50°	2,900	85
105										31°	1,650	44°	2,200	95
115										20°	1,050	37°	1,600	105

ON TIRES 360°				
RADIUS	MAX ANGLE	MIN ANGLE	ALL BOOM LENGTHS	RADIUS
10	75°	67°	26,900	10
12	75°	63°	22,600	12
15	75°	57°	14,100	15
20	75°	45°	9,750	20
25	75°	29°	6,500	25
30	74°	0°	4,200	30
35	69°	0°	2,850	35
40	61°	0°	1,950	40

MAXIMUM PERMISSIBLE LOAD IN LBS							
Line Parts	1	2	3	4	5	6	7
Main Hoist	9,500	19,000	28,500	38,000	47,500	57,000	66,000
Aux. Hoist	5,000	10,000	15,000	20,000	25,000	30,000	35,000
Boom Head	2	2-D	2-3	1-2-D	1-2-3	1-2-3-D	1-2-3-4
Hook Block	D	2	2-D	1-2	1-2-D	1-2-3	1-2-3-D

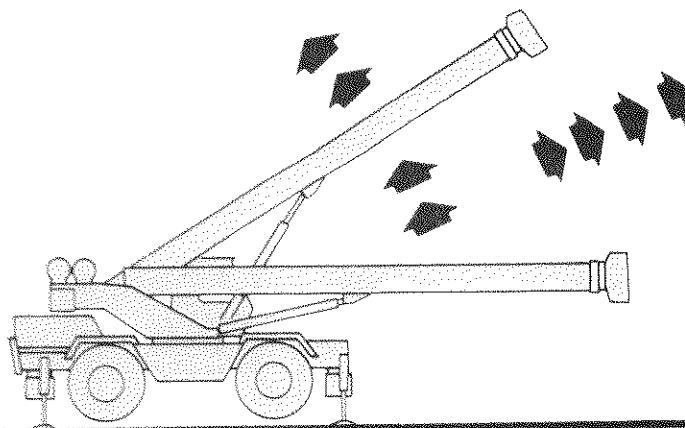
Main Hoist Line - 5/8" Dia. 6x19 IWRC, IPS, Reg. Lay Preformed Wire Rope.
 Minimum Breaking Strength - 17.9 Tons.
 Max. Permissible Line Pull - 10,228 Lbs.

Aux. Hoist Line - 1/2" Dia. 6x19 IWRC, IPS, Preformed Wire Rope.
 Minimum Breaking Strength - 11.5 Tons.
 Max. Permissible Line Pull - 5,265 Lbs.

- For boom lengths less than maximum with the side stow jib erected, the rated loads are determined by boom angle only in the appropriate jib plus boom column. For boom angles not shown, use the capacity of the next lower boom angle.
- When lifting off main boom head and jib is erected, deduct 1800 lbs. for side stow jib from main boom load chart capacities.

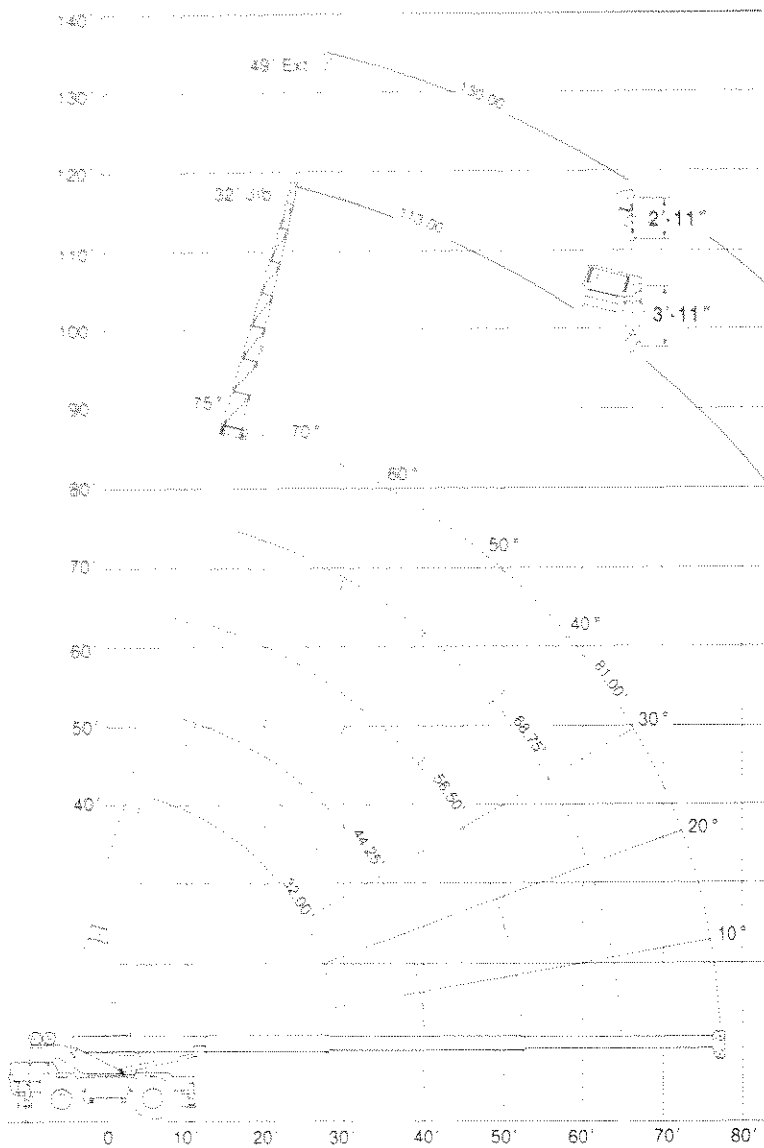
CAUTION
 Without outriggers, never maneuver boom beyond 70' radius over front or 40' radius over side to ensure stability.

Range Diagram



GENERAL AND SPECIFIC CAPACITY CONDITIONS AND LIMITATIONS

1. The rated loads as determined by boom length, radius or boom angle pertain to this crane as originally manufactured and equipped. They are maximum load ratings.
2. Crane load ratings are based on freely suspended loads with the machine leveled and standing on a firm, uniform, supporting surface. Practical working loads require the USER to make due allowances for the particular job conditions dependent upon supporting surface, wind, pendulum action of load, jerking or sudden stopping of loads, hazardous surroundings, experience of personnel, etc. Positioning of, or operation at, radii and boom or jib length beyond the maximum and minimum shown is not intended or approved. For boom lengths not shown, use load ratings of next longer boom. **SIDE PULL ON BOOM IS EXTREMELY DANGEROUS.**
3. Weight of hooks, hook blocks, slings and all other load handling devices, except hoist rope, shall be included as part of the load.
4. Chart ratings shown above the bold line or as specified are based on the machine's structural strength and not on the machine's stability. All other ratings are based on stability and do not exceed the specified percentage of tipping load.
5. CRANE LOAD RATINGS ON OUTRIGGERS ARE BASED ON OUTRIGGERS ALL BEING FULLY EXTENDED AND SET ON A FIRM SUPPORTING SURFACE TO PROVIDE FOR A LEVEL MACHINE.
6. This crane and rated loads shown are in accordance with standards of Power Crane And Shovel Association Standard No. 2 and SAE Crane Load Stability Test Code J-765.
7. The operator and other personnel should read and fully understand the Operator's Manual furnished by the manufacturer before operating this machine and rules for safe operation of equipment should be adhered to at all times. Operators and supervisors must fully understand safety standards for mobile hydraulic cranes ANSI B30.15 and be familiar with Federal, State and Local Safety Regulations.
8. The maximum load which may be telescoped is limited by boom angle, hydraulic pressure, boom lubrication, etc. When extending boom with load, do not exceed load rating at longest boom length required.
9. For clamshell, magnet, or concrete bucket operation, weight of bucket or magnet and load must not exceed 90% of load rating chart capacities.





27-1/2 TON CAPACITY (25 METRIC TON CAPACITY)

Lift Capacity

RECOMMENDED TIRE PRESSURE (PSI)			
WORK CONDITION	18x25-20 PR	23.5x25-20 PR	26.5x25-20 PR
LIFT, ON TIRES	85	70	60
ROADING*	60	50	45

*For improved tire wear, do not lift "On Tires" with these inflation pressures

CAUTION
Without outriggers, never maneuver boom beyond 70' radius over front or 40' radius over side to ensure stability.

ON TIRES ST. OVER FRONT				
R A D I U S	M A X A N G L E	M I N. A N G L E	A L L B O O M L E N G T H S	R A D I U S
10	75°	67°	50,200	10
12	75°	63°	41,500	12
15	75°	57°	30,700	15
20	75°	45°	20,500	20
25	75°	29°	14,700	25
30	74°	0°	10,500	30
35	69°	0°	8,050	35
40	61°	0°	6,250	40
50	52°	0°	3,950	50
60	41°	0°	2,550	60
70	27°	0°	1,600	70

ON TIRES 360°				
R A D I U S	M A X A N G L E	M I N. A N G L E	A L L B O O M L E N G T H S	R A D I U S
10	75°	67°	26,900	10
12	75°	63°	22,600	12
15	75°	57°	14,100	15
20	75°	45°	9,750	20
25	75°	29°	6,500	25
30	74°	0°	4,200	30
35	69°	0°	2,850	35
40	61°	0°	1,950	40



Operating Weights (Approximate)

WEIGHT: 55,060 lbs. (24,975 kg) with 81 ft. (24.7 m) boom and 4,300 lb. (1950 kg) counterweight.

Weight Distribution	Front	Rear	Total
Standard Machine	29,800 lbs. (13,517 kg)	25,260 lbs. (11,458 kg)	55,060 lbs. (24,975 kg)
32 ft. (9.8 m) jib	add 1,775 lbs. (805 kg)	sub 725 lbs. (329 kg)	add 1,050 lbs. (476 kg)
49 ft. (14.9 m) jib	add 1,936 lbs. (878 kg)	sub 536 lbs. (243 kg)	add 1,400 lbs. (635 kg)
Auxiliary Winch	add 83 lbs. (38 kg)	add 117 lbs. (53 kg)	add 200 lbs. (91 kg)
23.50 X 25 Tires	add 210 lbs. (95 kg)	add 210 lbs. (95 kg)	add 420 lbs. (190 kg)