
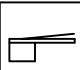

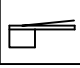
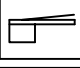
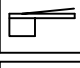
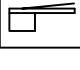


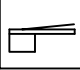
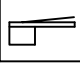
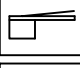
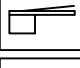



Curve di carico – Courbes de charges – Load diagrams – LastKurven – Curvas de cargas

Pmax 8000 kg

	24960 kg	83.9 m	2.5	27.6	30	35	40	45	50	55	60	65	70	75	80	83.9
			8000	8000	7150	6050	5000	4300	3850	3460	3000	2650	2400	2150	1850	1450
	24960 kg	78.3 m	2.5		30.5	35	40	45	50	55	60	65	70	75	78.3	
			8000		8000	6800	5800	5050	4450	3950	3500	3150	2850	2600	2400	
	23400 kg	72.7 m	2.5		33.9	35	40	45	50	55	60	65	70	72.7		
			8000		8000	7800	6860	5800	5050	4410	3900	3580	3300	3000		
	21840 kg	67.1 m	2.5			35.5	40	45	50	55	60	65	67.1			
			8000			8000	7500	6530	5650	4980	4450	3960	3630			
	20280 kg	61.5 m	2.5			37.8	40	45	50	55	60	61.5				
			8000			8000	7700	6800	5950	5200	4500	4350				
	18720 kg	55.9 m	2.5				40	45	50	55	55.9					
			8000				8000	7200	6100	5420	5300					
	18720 kg	50.3 m	2.5					41	45	50	50.3					
			8000					8000	7100	6300	6250					

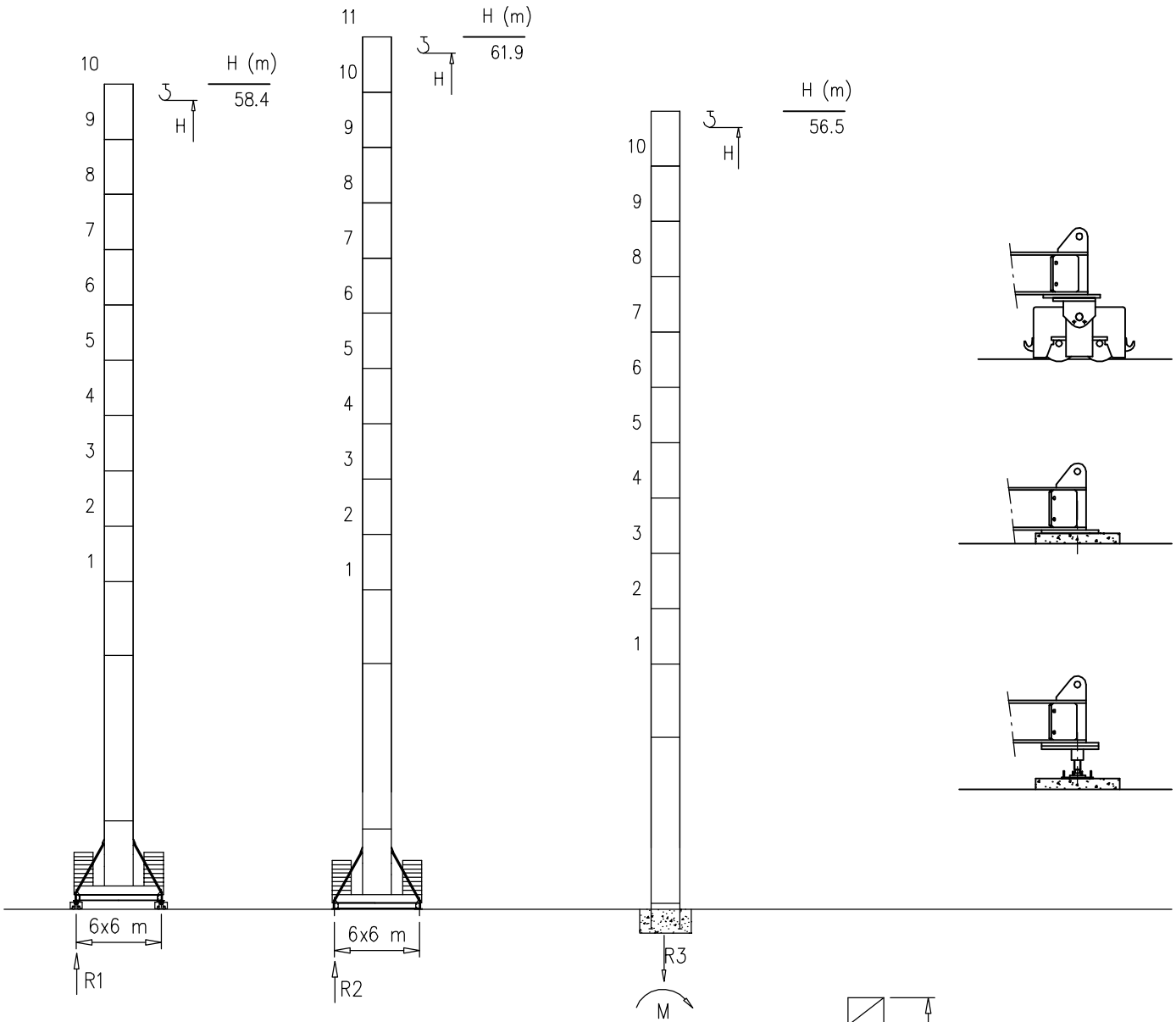


Pmax 16000/8000 kg

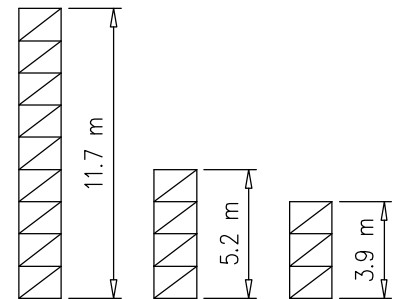
	24960 kg	83.9 m	2.5	14.3	15	20	25	27.6	30	35	40	45	50	55	60	65	70	75	80	83.9
			8000	16000	13480	11190	8780	8000	7150	6050	5000	4300	3850	3460	3000	2650	2400	2150	1850	1450
	24960 kg	78.3 m	2.5		16.4	20	25	30	30.5	35	40	45	50	55	60	65	70	75	78.3	
			8000		16000	12900	10100	8200	8000	6800	5800	5050	4450	3950	3500	3150	2850	2600	2400	
	23400 kg	72.7 m	2.5		18.7	20	25	30	33.9	35	40	45	50	55	60	65	70	72.7		
			8000		16000	14450	11380	9300	8000	7800	6860	5800	5050	4410	3900	3580	3300	3000		
	21840 kg	67.1 m	2.5		19.5	20	25	30	35	35.5	40	45	50	55	60	65	67.1			
			8000		16000	15400	12150	9980	8350	8000	7500	6530	5650	4980	4450	3960	3630			
	20280 kg	61.5 m	2.5			20.3	25	30	35	37.8	40	45	50	55	60	61.5				
			8000			16000	12670	10600	8880	8000	7700	6800	5950	5200	4500	4350				
	18720 kg	55.9 m	2.5				21.2	25	30	35	40	45	50	55	55.9					
			8000				16000	13350	10950	9200	8000	7200	6100	5420	5300					
	18720 kg	50.3 m	2.5				21.9	25	30	35	40	41	45	50	50.3					
			8000				16000	13840	11500	9660	8300	8000	7100	6300	6250					



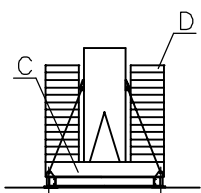
S2050



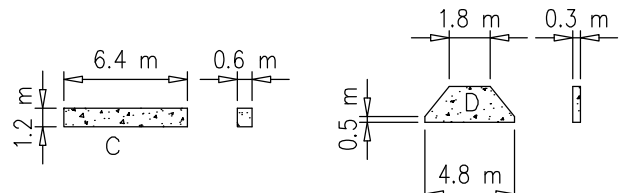
H=55–66 m	
R1	209 t
R2	217 t
R3	143 t
M	764 tm



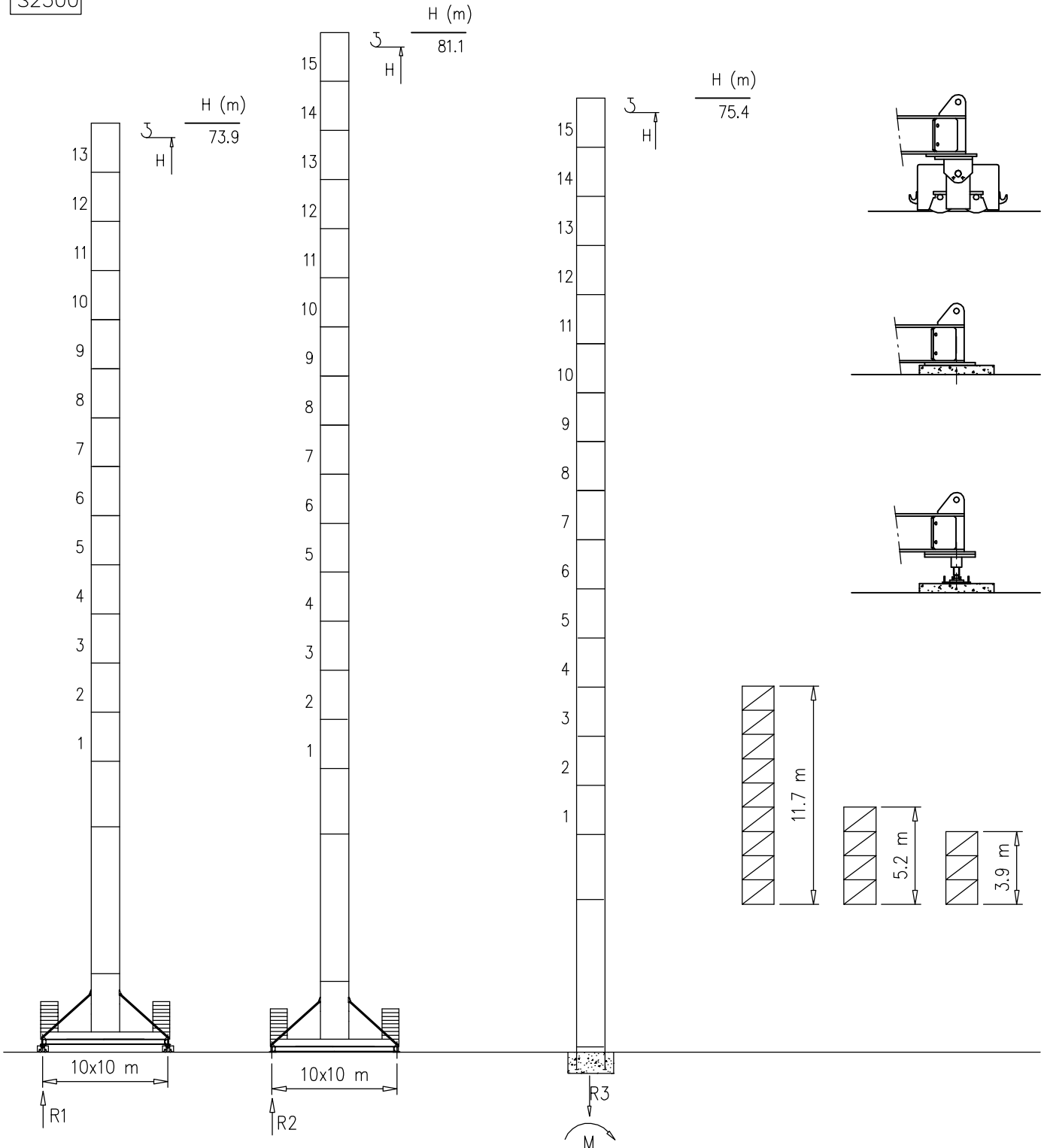
Peso zavorra – Ballast weight – Poids du lest – Ballastgewicht – Peso de lastre



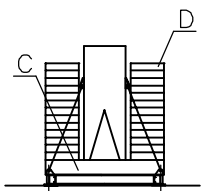
H	n°	Tot.
55–62 m	2C+28D	163160 kg



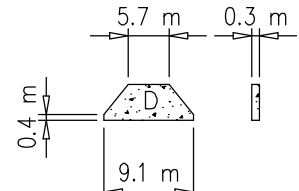
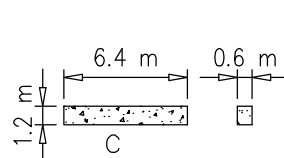
S2300



Peso zavorra – Ballast weight – Poids du lest – Ballastgewicht – Peso de lastre



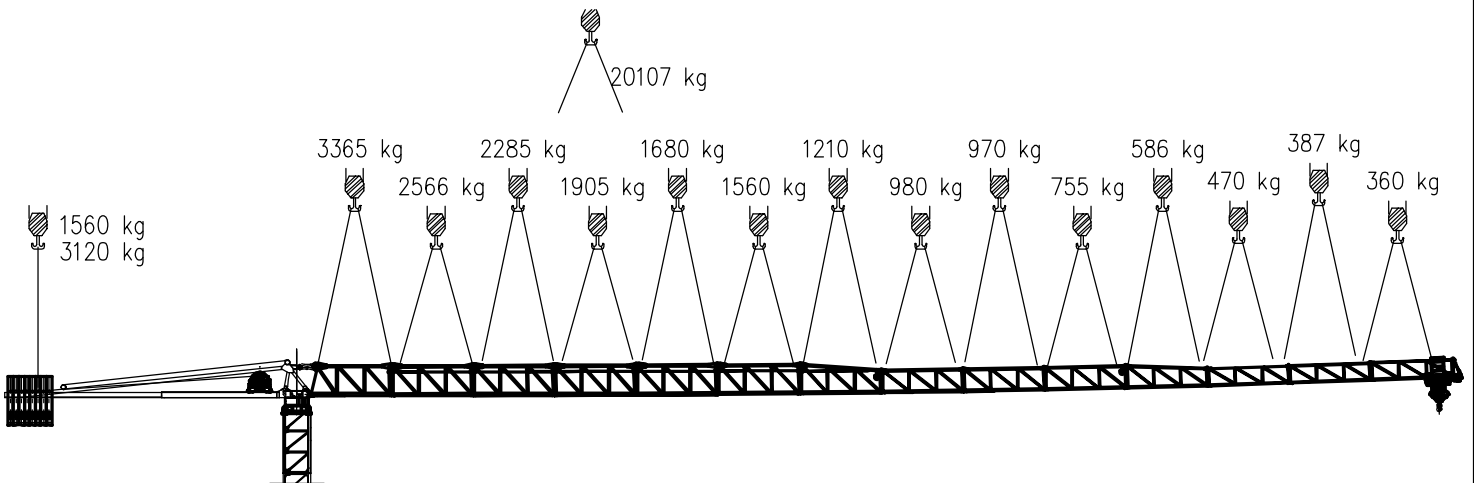
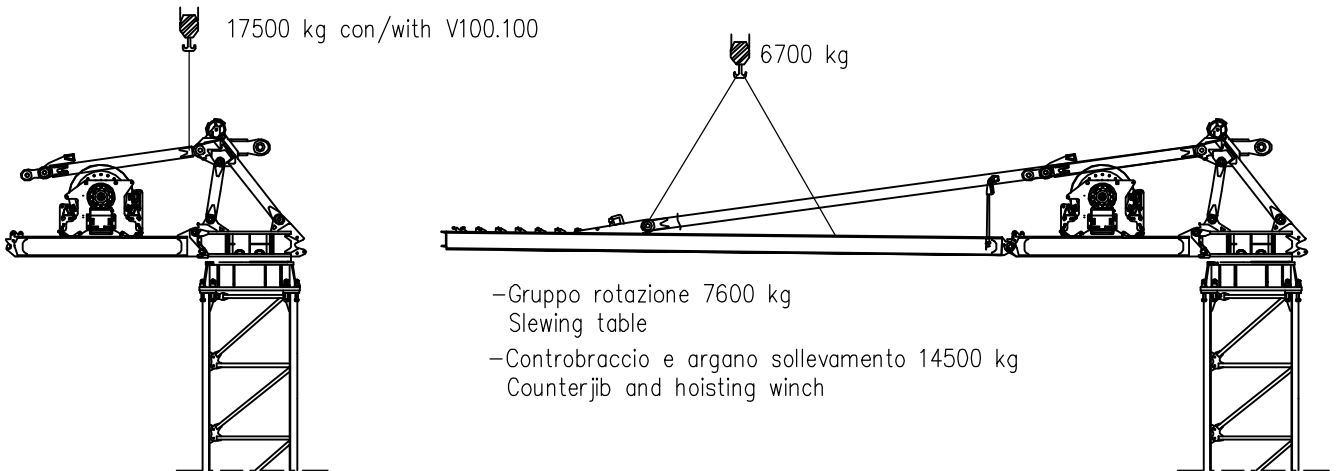
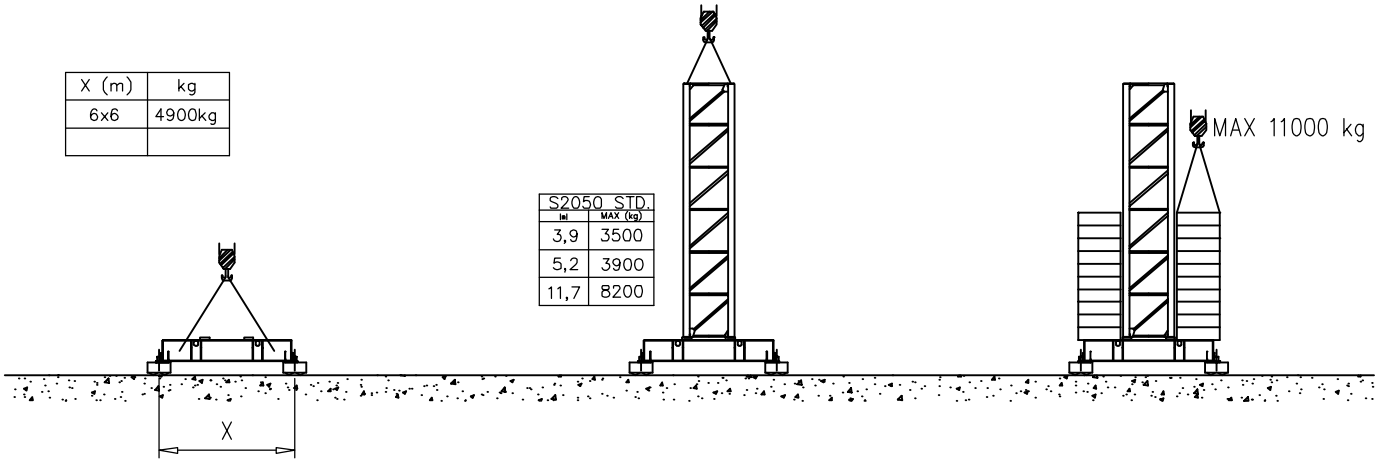
H	n°	Tot.
70–82 m	2C+14D	175000



Montaggio – Montage – Erection – Montage – Montaje – Montagem

X (m)	kg
6x6	4900kg

S2050 STD.	
H	MAX (kg)
3,9	3500
5,2	3900
11,7	8200



Meccanismi – Mechanisms – Mécanismes – Antriebe – Mecanismos

Meccanismi – Mechanisms – Mécanismes – Antriebe – Mecanismos

Sollevamento V60.60 Hoisting Elevaciòn			1a	2 m/min	8000 kg	45 kW	V60.60 57 kVA
			2a	20 m/min	8000 kg		
			3a	31 m/min	7000 kg		
			4a	46 m/min	4500 kg		
			5a	60 m/min	3000 kg		
			1a	1 m/min	16000 kg		
			2a	10 m/min	16000 kg		
			3a	15 m/min	14000 kg		
			4a	23 m/min	9000 kg		
			5a	30 m/min	6000 kg		
Sollevamento V100.100 Hoisting Elevaciòn			1a	4 m/min	8000 kg	75 kW	V100.100 110 kVA
			2a	44 m/min	8000 kg		
			3a	68 m/min	5000 kg		
			4a	82 m/min	4000 kg		
			5a	100 m/min	3000 kg		
			1a	2 m/min	16000 kg		
			2a	22 m/min	16000 kg		
			3a	34 m/min	10000 kg		
			4a	41 m/min	8000 kg		
			5a	50 m/min	6000 kg		
Carrello Trolleying Distribuciòn			1a	5 m/min	16000 kg	5.5 kW	Potenza elettrica necessaria Puissance électrique nécessaire Necessary electric power Anschlusswert – Potencia
			2a	40 m/min	16000 kg		
			3a	80 m/min	8000 kg		
Rotazione Slewing Orientaciòn			1a	0 → 0.2	giri/min tr/min rp/min	8.8 kW @ 1200rpm n° 4 x 2.2 kW	
			2a	0 → 0.6			
			3a	0 → 0.9			
Traslazione Travelling Traslaciòn			1a	0 → 5	15 kW		
			2a	0 → 20			

Rete elettrica – Réseau – Mains supply – Netzstrom – Red – Rede electrica

400V – 50 Hz



FMgru s.r.l.

via Emilia 11-29010 Pontenure PC ITALY  
tel. 0523/510446 ric.aut. fax 0523/510365  
www.fmgru.com e-mail: info@fmgru.com

FEM 1.001  
2000/14/CE



Documento commerciale non contrattuale  
Per tutte le informazioni tecniche riferirsi  
alle corrispondenti istruzioni

Unverbindliches Vertriebsdokument.  
Für technische Informationen, siehe die  
entsprechenden Anweisungen.

This commercial document is not legally  
binding. For any technical information, please  
refer to the corresponding instructions.

Documento comercial no contractual  
Para cualquier información técnica,  
ver la noticia correspondiente.